

SING EASY KP800 DIGITAL PROCESSOR

DIGITAL PROCESSOR

KP800 is a professional-grade digital processor designed for karaoke and other microphone based applications and provides a full set of audio processing for enhancing or fine-tuning music and voice. KP800 is equipped with two 6.5mm connectors for microphone input, two groups of RCA connectors and an optical connector for music input, and one pair of RCA connectors for recording out. It supports storage and recall of up to 10 pre-sets and manual or auto control of Dance or Sing mode.



Karaoke singers require unique reverb and effects to help untrained singers sound as good as possible. The Sing Easy KP800 dedicated karaoke processor has all the effects needed and digital signal processing (DSP) to configure input microphones and program material as well as setup any type of speaker.

FEATURES

- High-performance 32-bit DSP and A/D and D/A Converter, 24 bit, 48kHz HD Audio professional digital processor
- Four levels of AFE (Automatic Feedback Elimination) technology
- TFT display for intuitive operation and settings information
- 10-band parametric equalizer for microphone inputs
- 7-band parametric equalizer for audio inputs
- Six output channels: Right, Left, Centre, Sub, Surround Right and Surround Left
- Dance/Sing mode for manual/automatic subwoofer management
- 10 custom presets
- Independent control of Echo and Revert
- Two separate microphone input channels
- Two pairs of RCA connectors and an Optical connector for Music Input
- USB port on the front panel for MP3 playback
- PC Control Software
- RS232 port for home automation or KTV system control

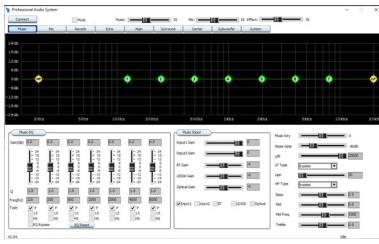
SPECIFICATIONS

Processor	32 bit
Analog / Digital Signal Conversion	24 bit, 48 KHz
Frequency Response	Music: 20Hz to 20kHz (± 1 dB) Mic: 20Hz to 20kHz (± 1 dB)
Signal-to-Noise Ratio	Music: >100dB Mic: >95dB (while effects, EQ, delay, and compression are off and the microphone's volume is at its highest)
Audio Inputs	Line: IN1, IN2 and Optical
Line Input Impedance	24 K Ohm
Maximum Input Level	Music: +12.0dBV Mic: +15.0dBV
Audio Outputs	XLR 5.1 Channel Output + RCA REC Out
XLR Output Impedance	30 Ohm balanced, 15 Ohm unbalanced
RCA Output Impedance	100 Ohm
Maximum Output Level	Music: +14.5dBu Mic: +14.5dBu
Power Requirements	AC 220V $\pm 10\%$ 50Hz
Net Weight	1.9Kg
Gross Weight	2.3Kg
Dimensions (W x H x D)	483 x 43 x 180 mm

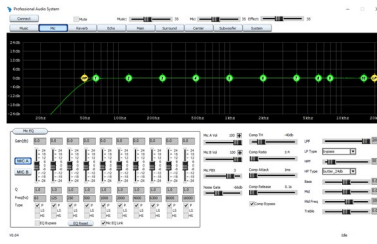
SING EASY KP800 DIGITAL PROCESSOR

DIGITAL PROCESSOR

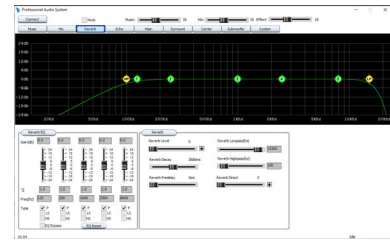
PC CONTROL SOFTWARE GUI



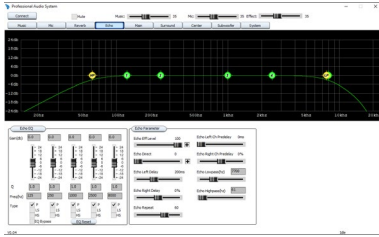
Music Settings



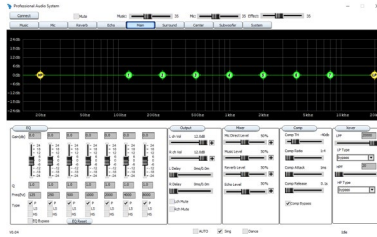
Microphone Settings



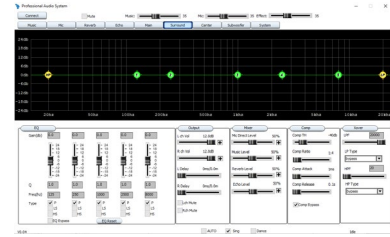
Reverb Settings



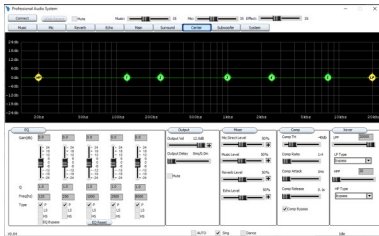
Echo Settings



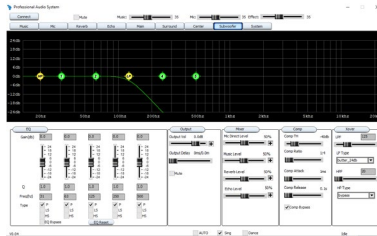
Main Output Settings



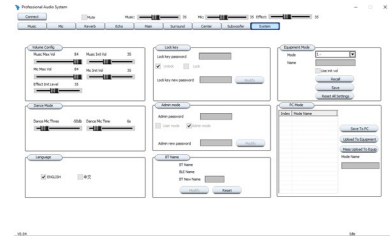
Surround Output Settings



Center Output Settings



Subwoofer Output Settings



System Settings



Copyright © 2022 Sing Easy Smart Entertainment. All rights reserved.



<http://singeasy.com>